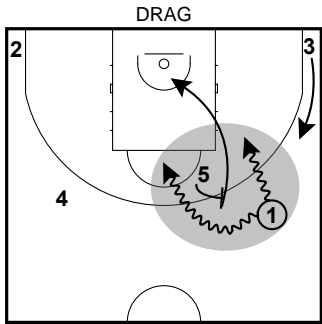


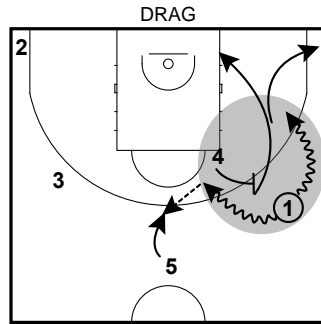


REAL MADRID

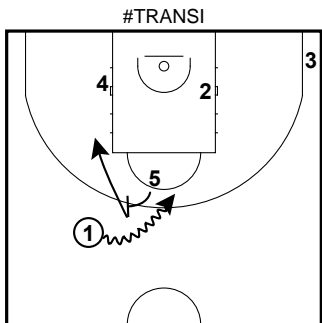
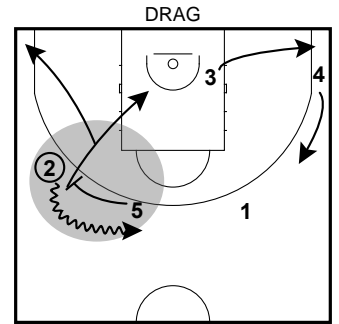
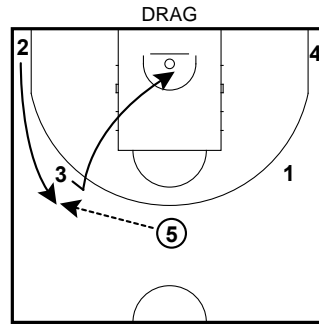
SECONDARY BREAK PLAYS



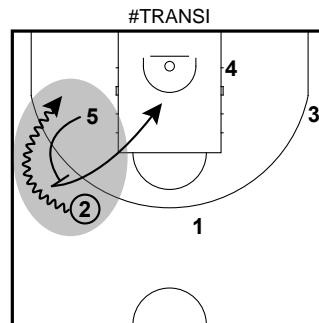
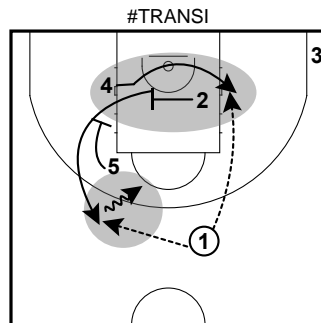
RANDOM SPREAD P&R
WATCH OUT #11 CAMPAZZO
REJECTS



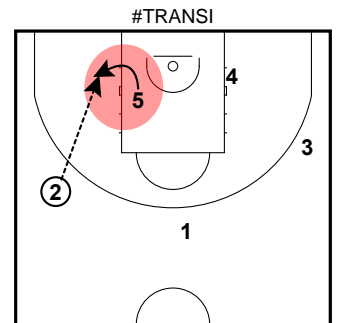
4 AND 5 CAN SWITCH SPOT



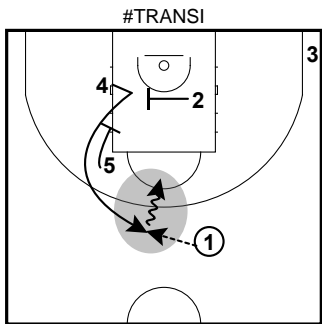
4 AND 5 CAN SWITCH SPOT



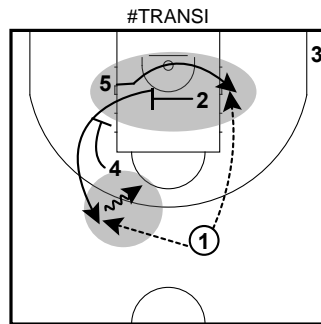
P&R CONTINUATION



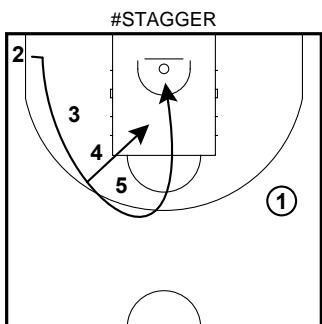
POST UP CONTINUATION



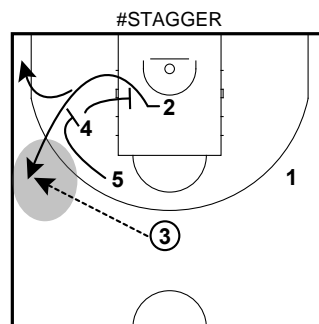
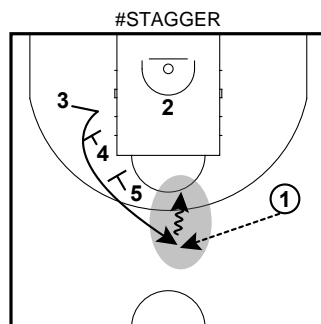
4MAN POP OPTION



ALSO WITH 4 AND 5 INVERTED



FERNANDEZ-CARROLL-CAUSEUR 3s



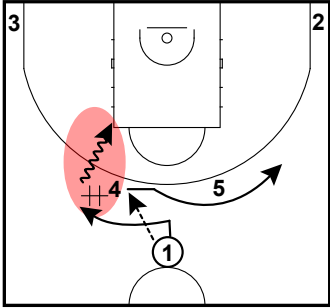
STAGGER + SPREAD P&R OPTION
They seldom use it



REAL MADRID

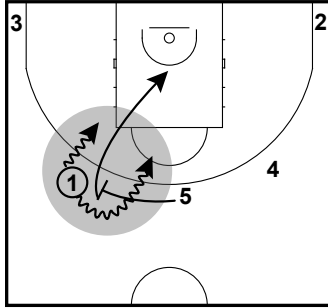
SIDE P&R

#HORNS SIDE

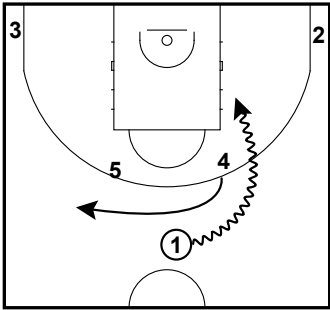


ALSO DRIBBLE ENTRY

#HORNS SIDE

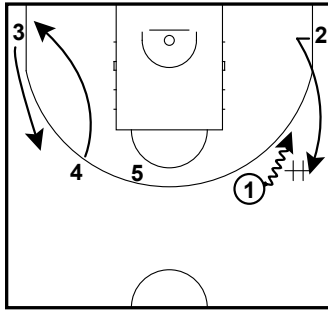


#5 SIDE



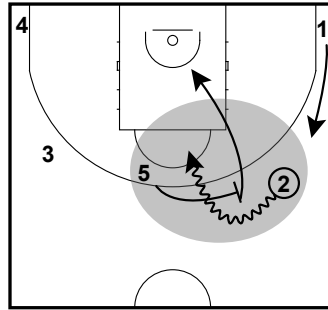
4MAN SLIPS

#5 SIDE



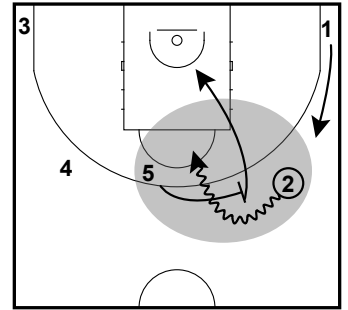
4MAN CAN STAY OR CUT

#5 SIDE



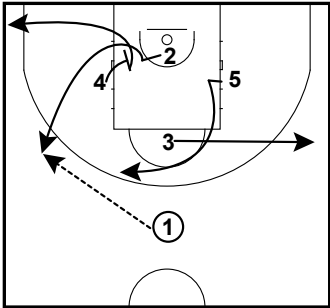
I ALIGNMENT

#5 SIDE



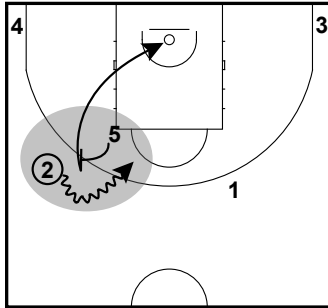
II ALIGNMENT

#3 SIDE

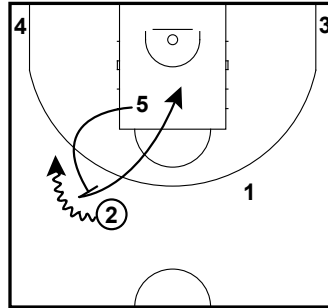


4 MAN SIDE

#3 SIDE

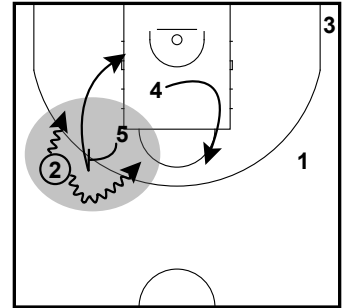


#3 SIDE



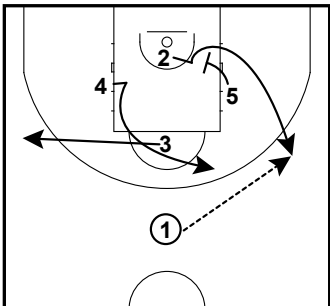
ALSO 5MAN FLIPS THE PICK

#3 SIDE



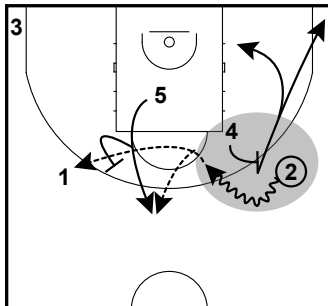
ALSO ANGLE CLEAR ALIGNMENT
MOSTLY vs. SWITCHING D

#3 SIDE



5 MAN SIDE

#3 SIDE

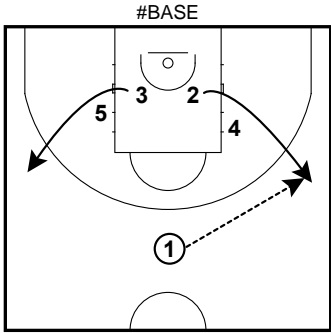


SIDE P&R WITH 4 CONTINUATION

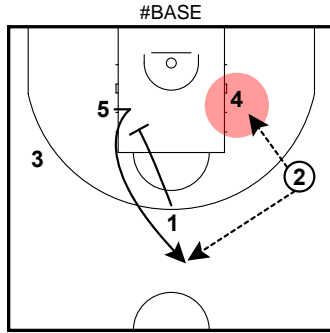


REAL MADRID

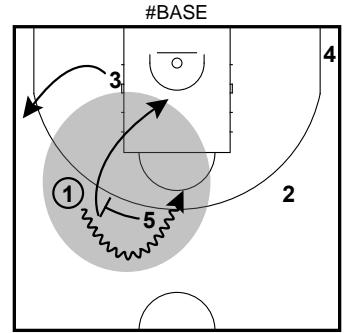
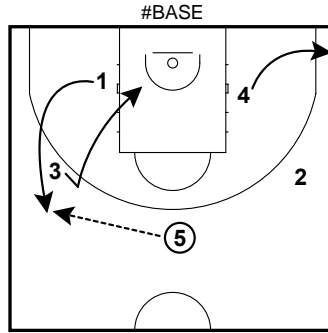
SIDE P&R



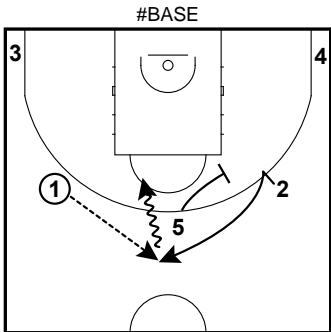
4MAN SIDE ENTRY
ALSO GUARDS CROSS ENTRY



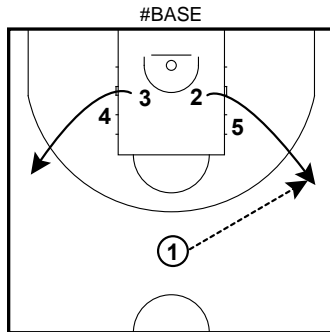
RANDOLPH - REYES POST UP



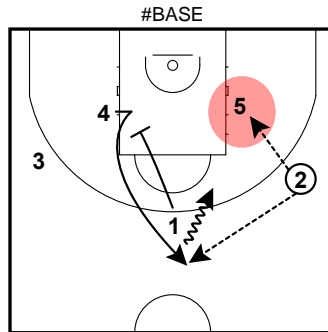
SIDE P&R OPTION



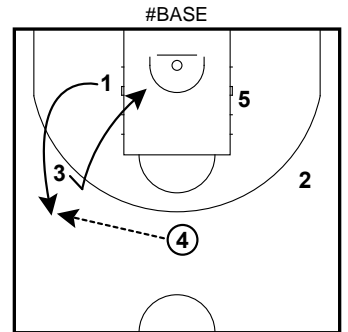
DOWN SCREEN OPTION
CARROL-CASEUR-DONCIC CURLs-3s



5MAN SIDE ENTRY
ALSO GUARDS CROSS ENTRY



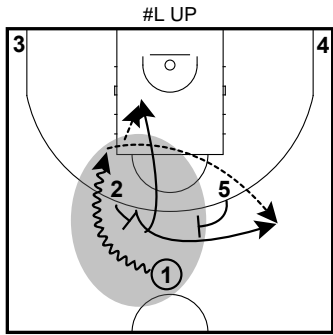
AYON POST UP



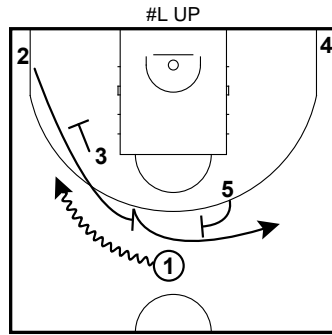


REAL MADRID

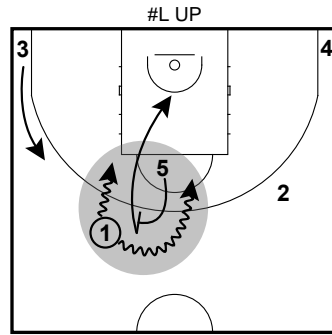
#L SERIES



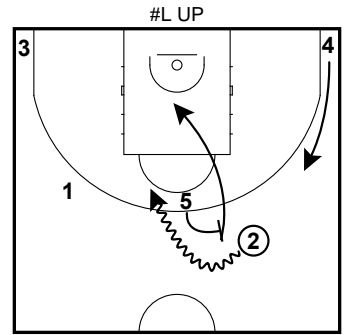
2MAN POP/SLIPS
GUARDS ROLL vs. SWITCH



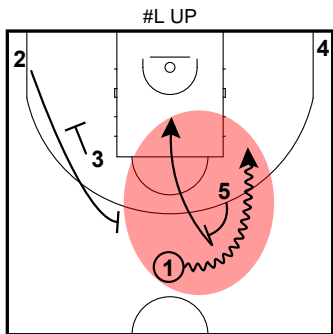
ALSO 3MAN SCREEN FOR 2MAN ENTRY



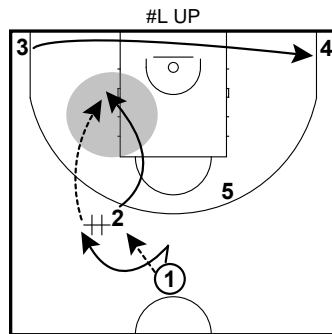
PG SPREAD P&R
#11 CAMPAZZO REJECTS



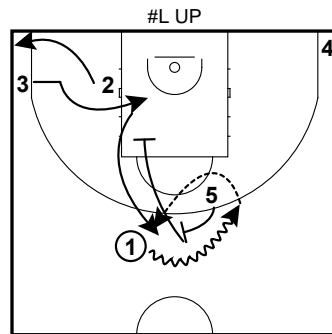
2MAN SPREAD P&R
Very seldom



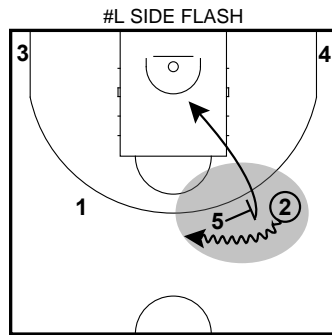
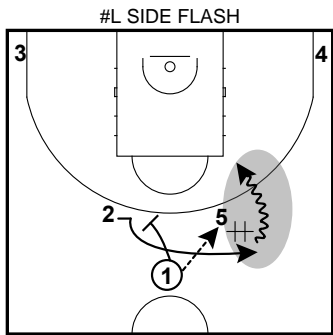
5MAN SIDE ENTRY



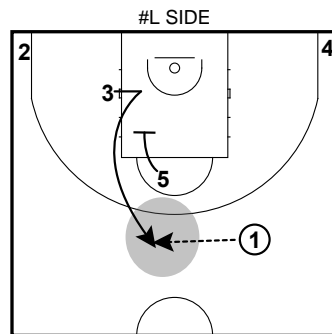
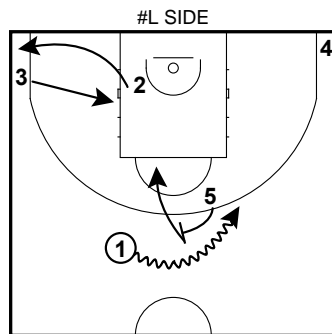
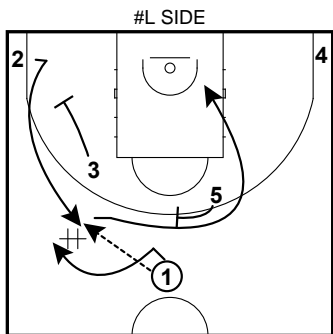
DONCIC POST UP OPTION



CARROLL EXIT OPTION



REPICK CONTINUATION

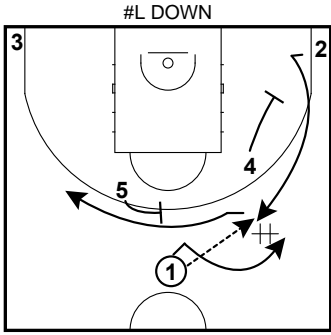


CARROLL-FERNANDEZ 3s

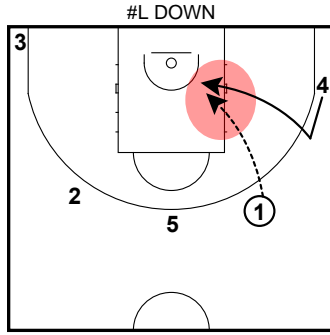


REAL MADRID

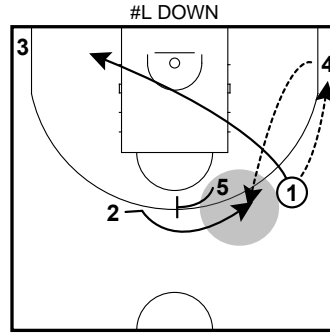
#L SERIES



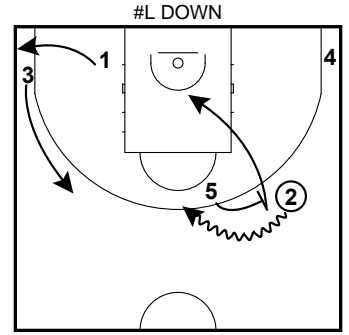
ALSO 2MAN BALL SCREEN



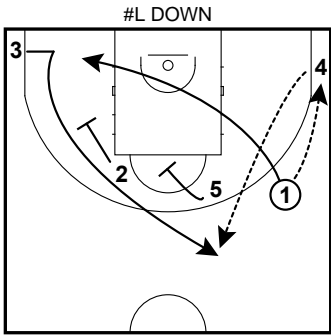
WATCH OUT 4MAN BACK DOOR



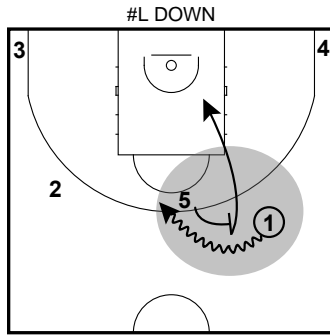
CORNER OPTION



P&R 2-5 CONTINUATION



TIMEOUT OPTION



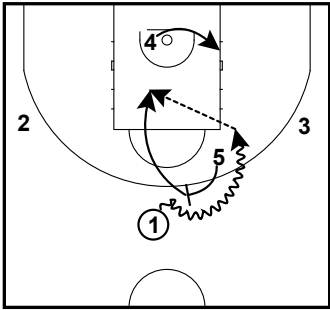
PG SPREAD P&R OPTION



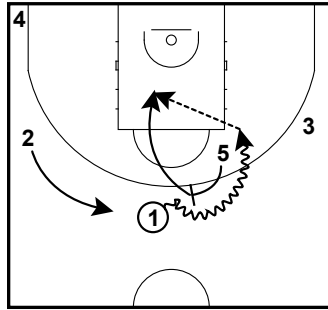
REAL MADRID

TOP P&R

#FIST UP

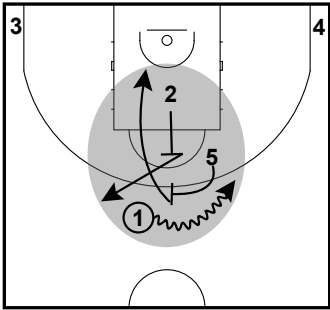


#FIST UP



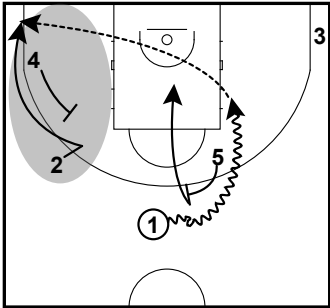
4MAN STRETCH

#P&R + BACK SCREEN



ALSO END OF THE QUARTER-GAME

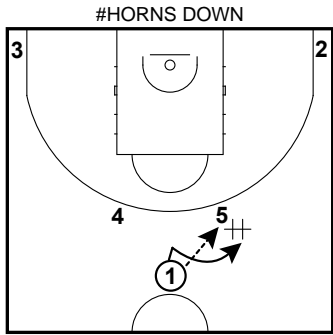
#PnR + HAMMER



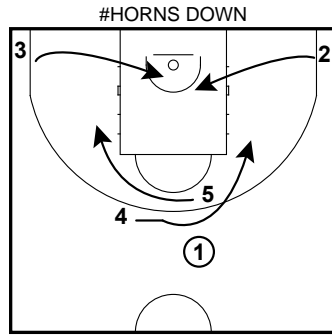


REAL MADRID

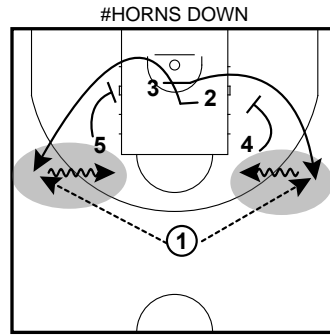
SCREENS-EXITS



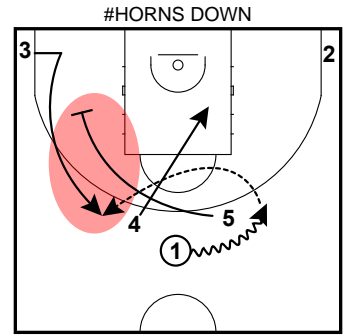
THEY CAN ENTRY ON BOTH BIG MEN
ALSO DRIBBLE ENTRY



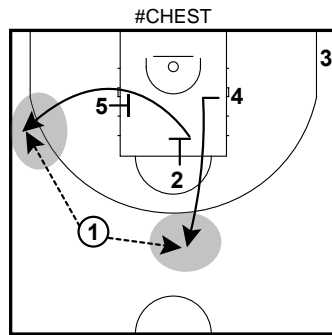
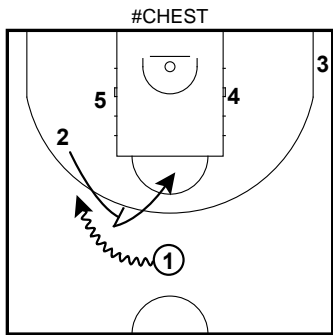
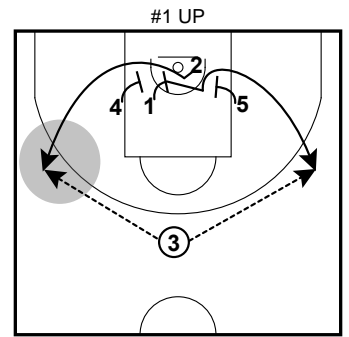
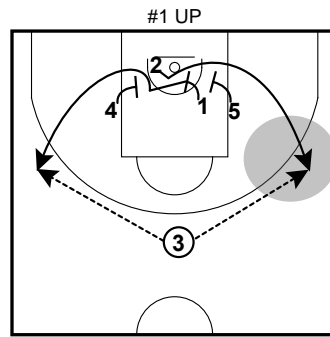
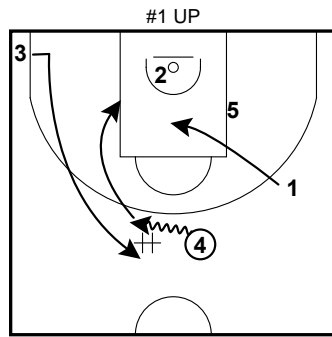
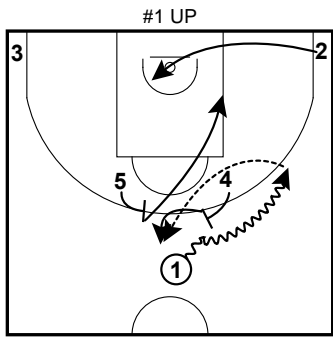
4MAN SLIPS



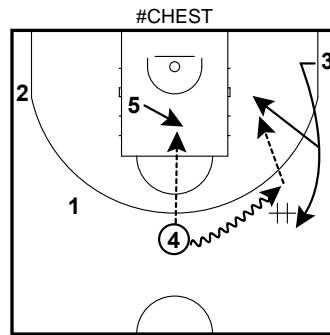
CARROLL-FERNANDEZ 3s-curls



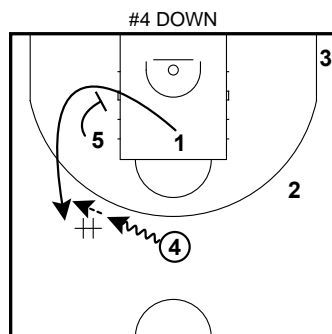
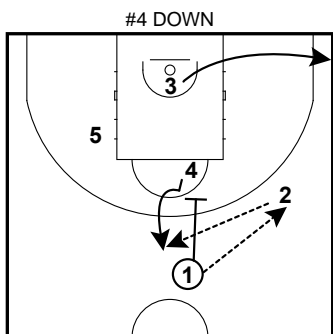
WIDE DOWN OPTION



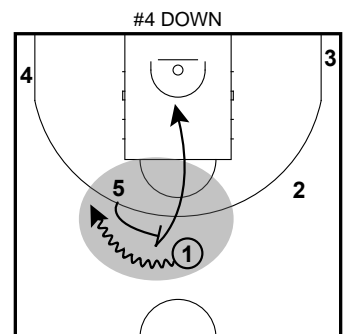
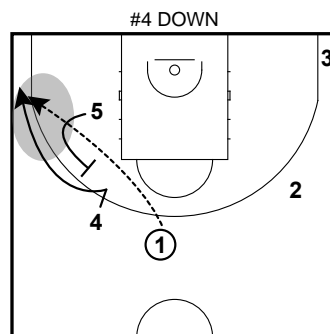
SCREEN THE SCREENER
CARROLL-FERNANDEZ 3s



HIGH-LOW or DRIBBLE HAND-OFF
CONTINUATION



4MAN PASS or DHO

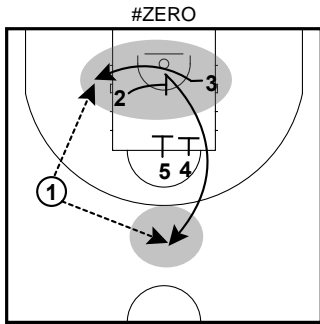


TOP P&R CONTINUATION

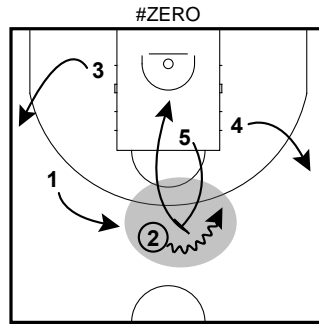


REAL MADRID

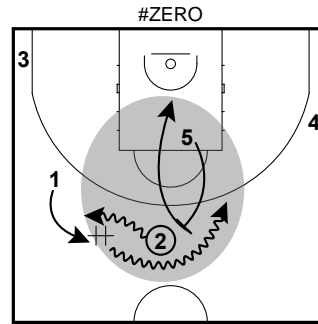
SCREENS-EXITS



#44 TAYLOR POST UP
CARROLL-FERNANDEZ 3s (ALSO
ELEVATOR)



TOP P&R CONTINUATION

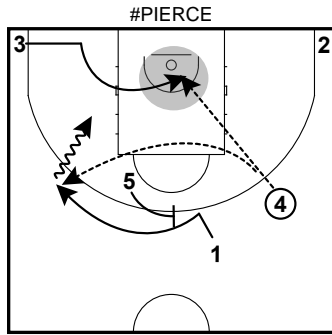
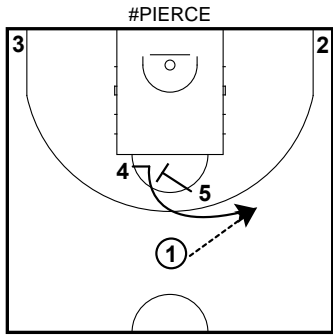


GUARDS HAND-OFF OPTION + TOP
P&R

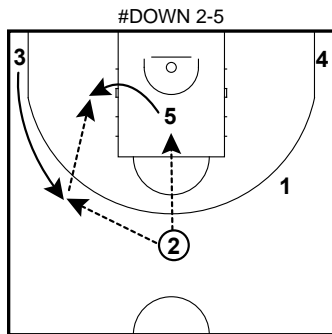
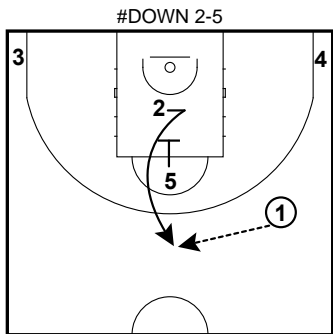


REAL MADRID

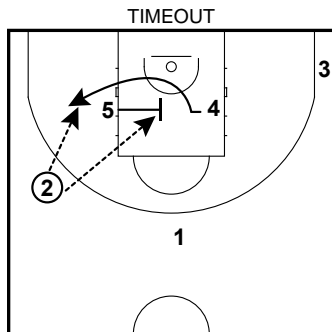
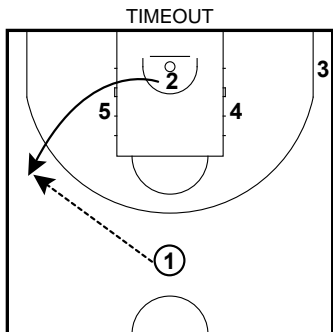
TIMEOUT PLAYS



DUCK IN - POST UP OPTION
#44 TAYLOR



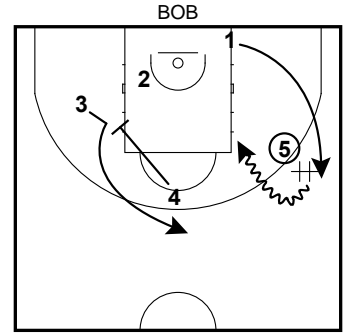
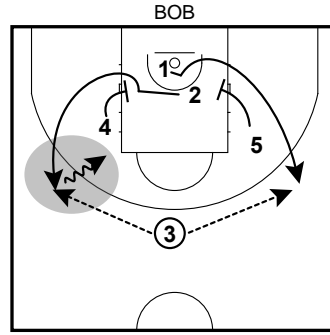
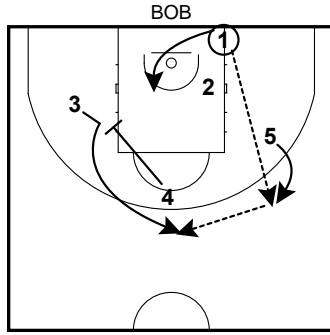
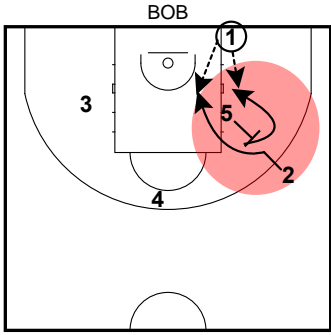
4MAN SLIPS





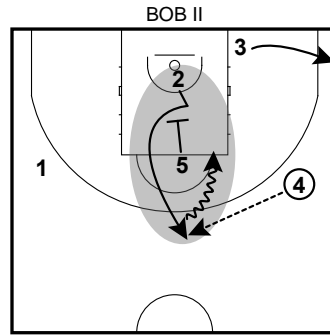
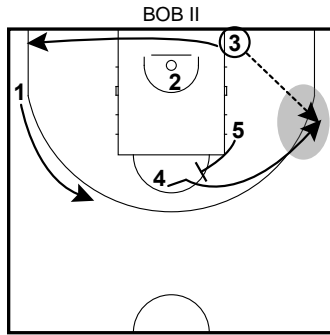
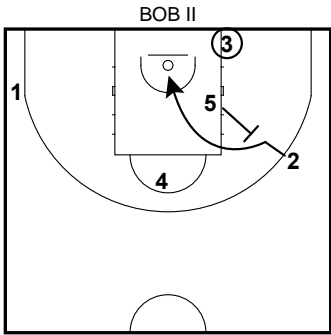
REAL MADRID

BASELINE OUT OF BOUNDS



SINGLE-DOUBLE CONTINUATION
Carroll-Fernandez exits & 3s-curls-1on1

STRAIGHT HAND-OFF OPTION



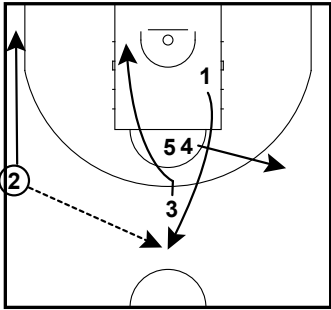
DOWN SCREEN CONTINUATION
Carroll 3s-curls



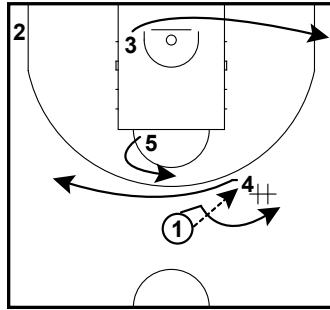
REAL MADRID

SIDELINE OUT OF BOUNDS

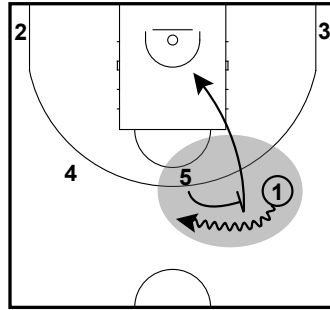
SOB HORNS SIDE



SOB HORNS SIDE

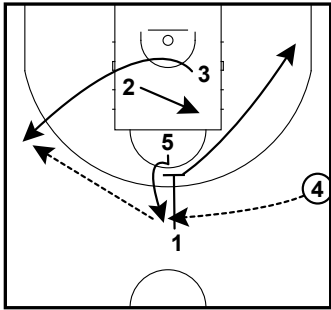


SOB HORNS SIDE

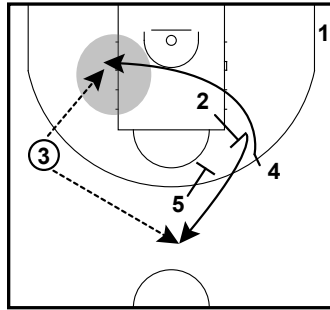


DOUBLE HIGH CONTINUATION

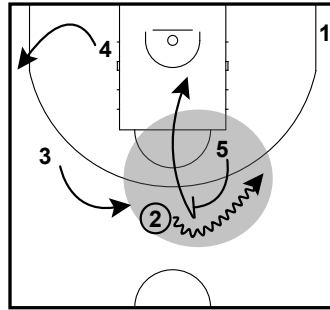
SOB 4 UP



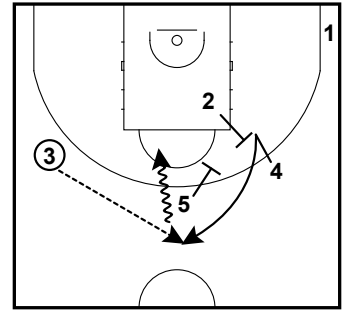
SOB 4 UP



SOB 4 UP



SOB 4 UP

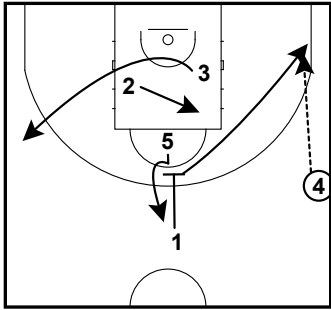


1 AND 2 CAN SWITCH SPOT

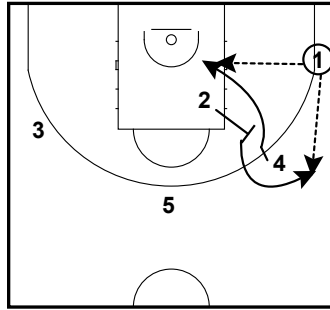
TOP P&R CONTINUATION

RANDOLPH POP OPTION

SOB 4 UP

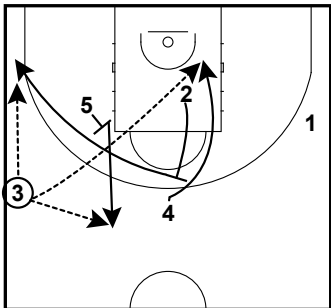


SOB 4 UP

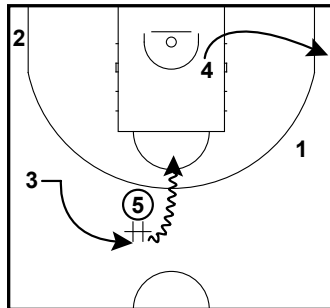


CORNER OPTION

SOB STS



SOB STS



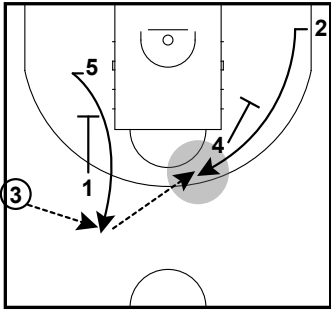
BALL TO 5MAN + HAND-OFF CONTINUATION



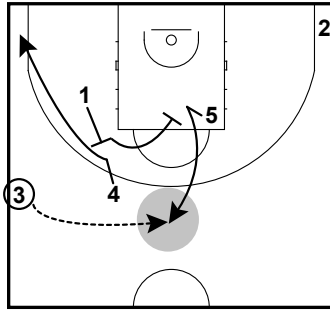
REAL MADRID

SIDELINE OUT OF BOUNDS

SOB TIMEOUT I

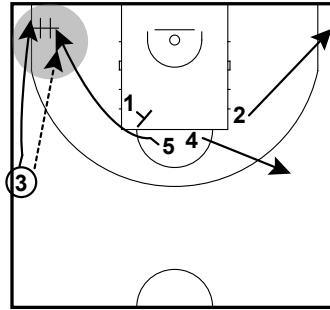


SOB TIMEOUT II



WITH RANDOLPH AT THE 5

SOB TIMEOUT



WITH RANDOLPH AT THE 5